

Top Products Inc. Sinks



SC8104D
20" x 17" Ceramic Basin

Specifications:

- 20" x 17" Oval Ceramic Basin
- 4" Center Faucet Install
- Includes Overflow Standards
- UPC Compliant
- Available Color - White



SC53E
21" x 18" Rectangle Basin

Specifications:

- 20 7/8" x 18 1/8" Rectangle Ceramic Basin
- 4" Center For Faucet
- Includes Over-Flow Standards
- UPC/CUPC Compliant
- Available Color - White



HT3120S
Single Bowl Sink

Specifications:

- 31" x 20" x 7 3/4"
- Single Bowl
- 304 Stainless Steel
- 18 Gauge Thickness
- Includes Mounting Hardware
- IAPMO/UPC Listed



SC2005-8

Specifications:

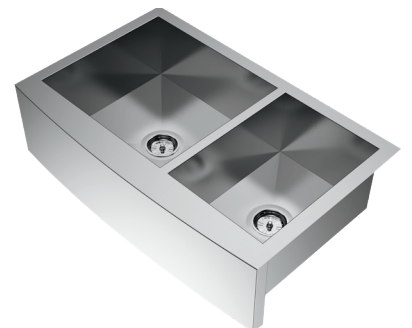
- 33" x 22" x 8"
- 2-Bowl Design
- 4-Hole Faucet Mount
- 304 Stainless Steel
- 20 Gauge Thickness
- Includes Mounting Hardware
- 4th Hole Cover
- IAPMO/UPC Listed



SC3120S
Single Bowl Apron Sink

Specifications:

- 31" x 20" x 7 3/4"
- Single Bowl
- Flat Front Design
- 304 Stainless Steel
- 18 Gauge Thickness
- Includes Mounting Hardware
- IAPMO/UPC Listed



SC3220OC
Double Bowl Apron Sink

Specifications:

- 32" x 20" x 7 3/4"
- 60/40 Double Bowl
- Curved Front Design
- 304 Stainless Steel
- 18 Gauge Thickness
- Includes Mounting Hardware
- IAPMO/UPC Listed